

GCSE (9–1)

Exemplar Candidate Work

ART AND DESIGN

J170-J176

For first teaching in 2016

Externally set task

J170/02

J176/02

Version 1

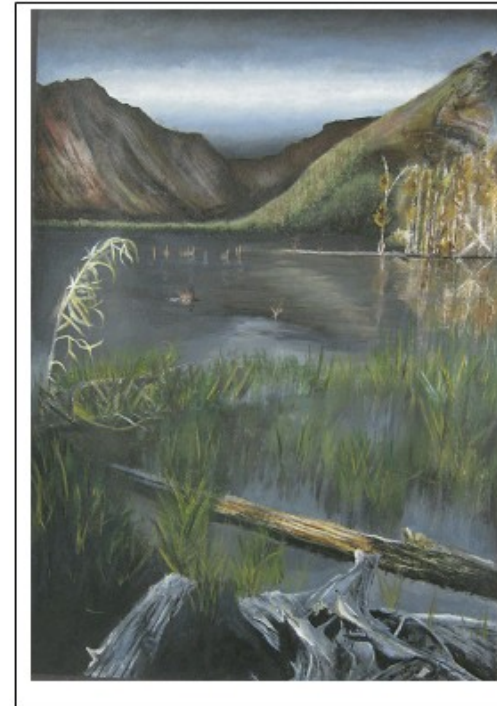


2016
2017

OCR

CPD

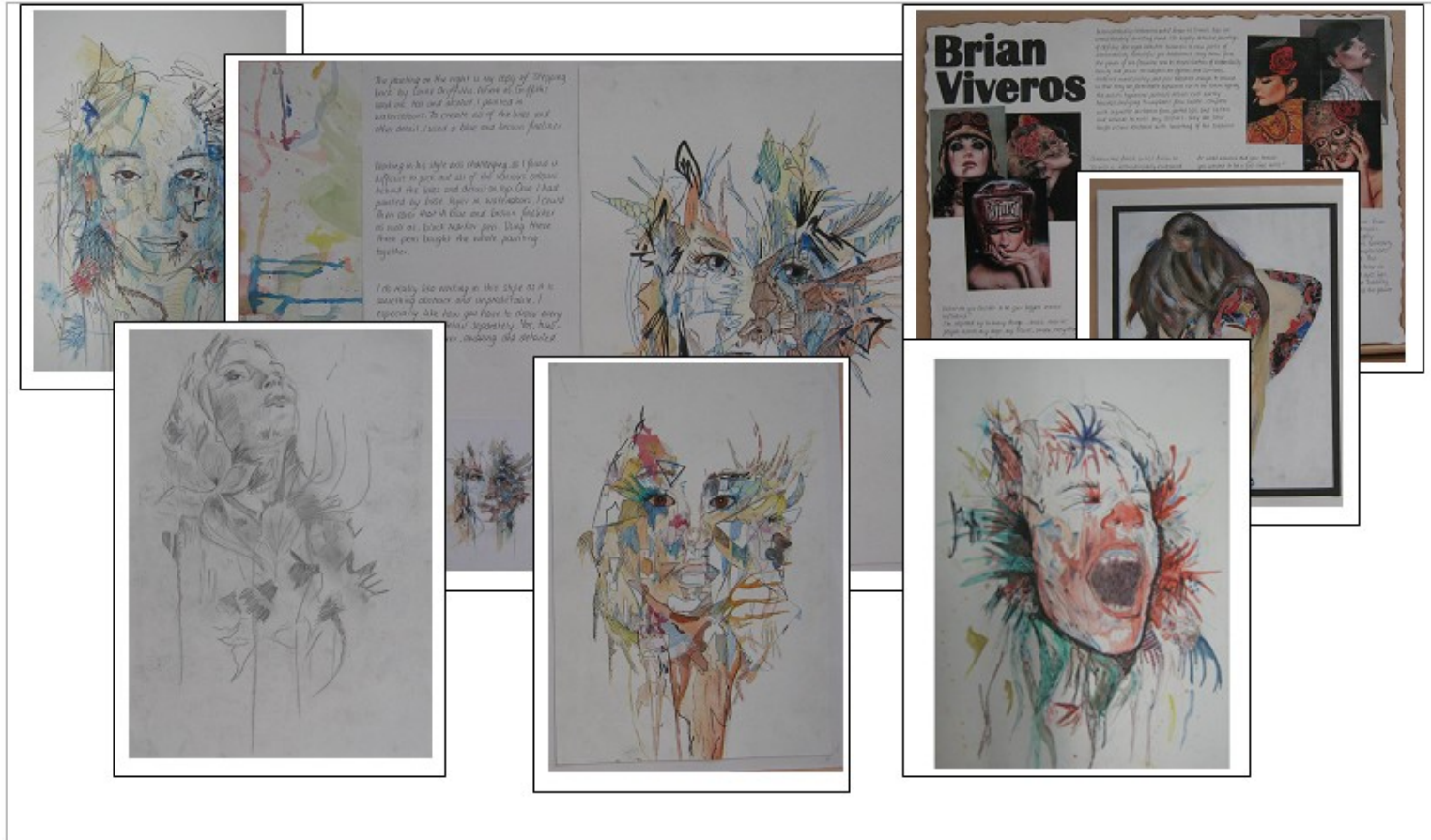
Externally
set task
J170/02
J176/02



[GCSE (9–1) IN ART AND DESIGN]

The contents of this Exemplar Material document are to be used for reference and guidance only and should not be used as a mark scheme in place of the Assessment Objectives

| | | |
|---|----------------------------------|----------------|
| Externally set task 1 | | Fine Art |
| Exemplar Stand | | Mark 80 |
| | | |
| Description | Level | Mark |
| Ideas are developed with sophisticated reference to contextual sources, with evidence of perceptive investigation. Demonstrates excellent critical understanding of source | AO1: DEVELOP Level: 6 | 20 |
| Sophisticated refinement with perceptive selection of media, materials, techniques and processes. Excellent evidence of the exploration of work as it develops. | AO2: REFINE Level: 6 | 20 |
| Excellent recording of ideas, observations and insights showing sophisticated links to intention. Excellent ability to reflect on work and progress. | AO3: RECORD Level: 6 | 20 |
| A personal response with sophisticated realisation of intentions. Understanding of visual language, applying formal elements, is perceptive and sophisticated. | AO4: PRESENT Level: 6 | 20 |



| | | |
|---|--|----------------|
| Externally set task 2 Exemplar Stand | | Fine Art |
| | | Mark 76 |
| | | |
| Description | Level | Mark |
| Ideas are developed with sophisticated reference to contextual sources, with evidence of perceptive investigation. Demonstrates excellent critical understanding of source | AO1: DEVELOP Level: 6 | 19 |
| Sophisticated refinement with perceptive selection of media, materials, techniques and processes. Excellent evidence of the exploration of work as it develops. | AO2: REFINE Level: 6 | 19 |
| Excellent recording of ideas, observations and insights showing sophisticated links to intention. Excellent ability to reflect on work and progress. | AO3: RECORD Level: 6 | 19 |
| A personal response with sophisticated realisation of intentions. Understanding of visual language, applying formal elements, is perceptive and sophisticated. | AO4: PRESENT Level: 6 | 19 |



| | | |
|--|----------------------------------|----------------|
| Externally set task 3 | | Fine Art |
| Exemplar Stand | | Mark 57 |
| | | |
| | | |
| Description | Level | Mark |
| Ideas are developed with detailed reference to contextual sources, with evidence of confident investigation. Demonstrates in-depth critical understanding of sources. | AO1: DEVELOP Level: 5 | 14 |
| Confident refinement with a fully-developed selection of media, materials, techniques and processes. In-depth evidence of the exploration of work as it develops | AO2: REFINE Level: 5 | 14 |
| Confident recording of ideas, observations and insights showing fully-developed links to intention. Confident ability to reflect on work and progress. | AO3: RECORD Level: 5 | 14 |
| A personal response with confident realisation of intentions. Understanding of visual language, applying formal elements is confident and fully-developed. | AO4: PRESENT Level: 5 | 15 |



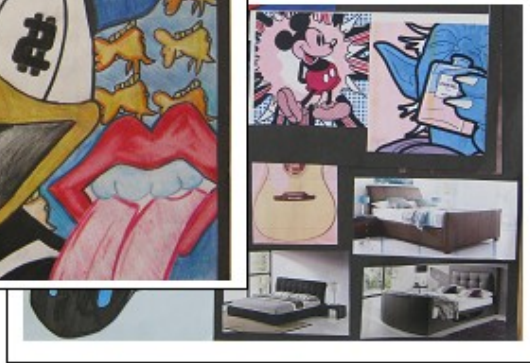
| | | |
|--|----------------------------------|----------------|
| Externally set task 4 | | Fine Art |
| Exemplar Stand | | Mark 51 |
| | | |
| | | |
| Description | Level | Mark |
| Ideas are developed with well-informed reference to contextual sources, with evidence of effective investigation. Demonstrates well-informed critical understanding of sources. | AO1: DEVELOP Level: 4 | 13 |
| Well-considered refinement with effective selection of relevant media, materials, techniques and processes. Well-considered evidence of the exploration of work as it develops. | AO2: REFINE Level: 4 | 13 |
| Well-considered recording of ideas, observations and insights showing well-informed links to intention. Well-Informed ability to reflect on work and progress. | AO3: RECORD Level: 4 | 13 |
| A personal response with well-informed realisation of intentions. Understanding of visual language, applying formal elements, is well-informed and effective. | AO4: PRESENT Level: 4 | 12 |



| | | |
|--|----------------------------------|-----------------|
| Externally set task 5 | | Graphics |
| Exemplar Stand | | Mark 45 |
| | | |
| Description | Level | Mark |
| Ideas are developed with well-informed reference to contextual sources, with evidence of effective investigation. Demonstrates well-informed critical understanding of sources. | AO1: DEVELOP Level: 4 | 12 |
| Well-considered refinement with effective selection of relevant media, materials, techniques and processes. Well-considered evidence of the exploration of work as it develops. | AO2: REFINE Level: 4 | 11 |
| Informed recording of ideas, observations and insights showing relevant links to intention. Competent ability to reflect on work and progress. | AO3: RECORD Level: 3 | 10 |
| A personal response with well-informed realisation of intentions. Understanding of visual language, applying formal elements, is well-informed and effective. | AO4: PRESENT Level: 4 | 12 |



| | | |
|--|----------------------------------|-----------------|
| Externally set task 6 | | Fine Art |
| Exemplar Stand | | Mark 33 |
| | | |
| Description | Level | Mark |
| Ideas are developed with competent reference to appropriate contextual sources, with evidence of informed investigation. Demonstrates competent critical understanding of sources | AO1: DEVELOP Level: 3 | 8 |
| Informed refinement with appropriate and relevant selection of media, materials, techniques and processes. Competent evidence of the exploration of work as it develops. | AO2: REFINE Level: 3 | 8 |
| Informed recording of ideas, observations and insights showing relevant links to intention. Competent ability to reflect on work and progress. | AO3: RECORD Level: 3 | 8 |
| A personal response with competent realisation of intentions. Understanding of visual language, applying formal elements, is competent. | AO4: PRESENT Level: 3 | 9 |





We'd like to know your view on the resources we produce. By clicking on the 'Like' or 'Dislike' button you can help us to ensure that our resources work for you. When the email template pops up please add additional comments if you wish and then just click 'Send'. Thank you.

Whether you already offer OCR qualifications, are new to OCR, or are considering switching from your current provider/awarding organisation, you can request more information by completing the Expression of Interest form which can be found here: www.ocr.org.uk/expression-of-interest

OCR Resources: *the small print*

OCR's resources are provided to support the delivery of OCR qualifications, but in no way constitute an endorsed teaching method that is required by OCR. Whilst every effort is made to ensure the accuracy of the content, OCR cannot be held responsible for any errors or omissions within these resources. We update our resources on a regular basis, so please check the OCR website to ensure you have the most up to date version.

This resource may be freely copied and distributed, as long as the OCR logo and this small print remain intact and OCR is acknowledged as the originator of this work.

OCR acknowledges the use of the following content:
Square down and Square up: alexwhite/Shutterstock.com

Please get in touch if you want to discuss the accessibility of resources we offer to support delivery of our qualifications:
resources.feedback@ocr.org.uk

Looking for a resource?

There is now a quick and easy search tool to help find **free** resources for your qualification:
www.ocr.org.uk/i-want-to/find-resources/

www.ocr.org.uk/gcsereform

OCR Customer Contact Centre

General qualifications

Telephone 01223 553998

Facsimile 01223 552627

Email general.qualifications@ocr.org.uk

OCR is part of Cambridge Assessment, a department of the University of Cambridge. *For staff training purposes and as part of our quality assurance programme your call may be recorded or monitored.*

© **OCR 2016** Oxford Cambridge and RSA Examinations is a Company Limited by Guarantee. Registered in England. Registered office 1 Hills Road, Cambridge CB1 2EU. Registered company number 3484466. OCR is an exempt charity.

